

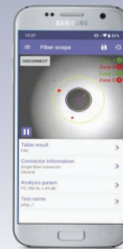
# DI-3000

Auto-Focus Digital Fiber Inspection Microscope



## Fiber Inspection Scope with WiFi and USB

WiFi connectivity enables tether-free operation with Android or Apple iOS mobile devices including select VeEX test platforms. USB operation is available for Windows PC applications or when WiFi use is prohibited. One-touch auto-focus along with powerful host software ensures fast, reliable connector inspection and endface analysis according to relevant IEC standards.

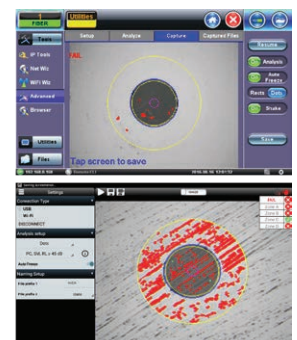
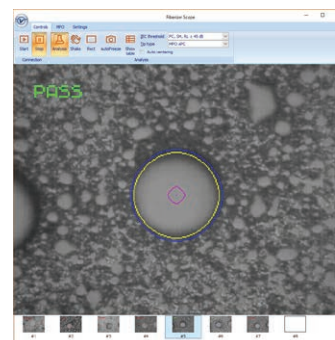


## Platform Highlights

- One hand (left or right side), one touch operation
- Wireless connectivity with host device via WiFi
- Wired connectivity with host device via USB cable
- Fast (~2s), auto-focus image capture with focus indication
- 1/4" CMOS camera enabling 400x magnification
- Compatible with a wide variety of VeEX host devices:
  - Android mobile devices with Fiberizer FMS software
  - iOS mobile devices with Fiberizer FMiOS software
  - Windows PCs equipped with Fiberizer Scope software
  - VeEX test platforms equipped with USB or WiFi option\*
- (MTTplus, TX300-Series, V150 series and RXT)
- Built-in flashlight for use in dark lighting conditions
- Blue LED light source for optimal end-face illumination
- Self powered by built-in rechargeable Li-ion battery
- Up to 7 hours continuous use on a fully charged battery
- Convenient 5 Volt DC charging via Micro-USB interface
- Extended operation using 5V DC USB power pack
- Inspect (male) and bulkhead (female) connectors
- Wide range of tips for PC, UPC and APC end-face types
- Weight including battery 178 g

## Auto Focus Detection & Analysis

- Probe automatically performs and detects optimal image focus
- Focused image is automatically transferred to host device for viewing and Pass/Fail analysis per IEC 61300-3-35 standards
- No human intervention necessary during image focus, transfer and analysis process
- User can manually refocus/recapture images as required
- Report generation (html and PDF) directly from host device
- Image compare function enables before/after inspection for cleaning purposes



\*Limitations or connection support may apply to select models

## Ordering Information

Z06-00-043P DI-3000 Video Fiber Scope, WiFi/USB 2.0 Version including standard tips: F99-00-078G, F99-00-079G, F99-00-098G, F99-00-116G

### Recommended Accessories

F99-00-078G Universal 2.5 mm probe tip for PC type male connectors

F99-00-079G Universal 1.25 mm probe tip for PC type male connectors

F99-00-080G Probe tip for 1.25 mm male ELIO connectors and termini

F99-00-081G Universal 2.0 mm probe tip for PC type male termini and LEMO F2

F99-00-082G Tip for Biconic connectors

F99-00-095G Tip for SMA 905 male connectors

F99-00-096G Universal 2.5 mm probe tip for APC type male connectors

F99-00-097G Universal 1.25 mm probe tip for APC type male connectors

F99-00-098G Tip for SC and FC PC type female connectors

F99-00-099G Short Extended tip for FC and SC PC type female connectors

F99-00-100G Medium Extended tip for FC and SC PC type female connectors

F99-00-101G Long Extended tip for FC and SC PC type female connectors

F99-00-102G 60 degree angled tip for FC and SC PC type female connectors

F99-00-103G Tip for SC and FC APC type female connectors - recommended for FC/APC only

F99-00-104G Short Extended tip for SC APC type female connectors

F99-00-105G 60 degree angled tip for SC APC type female connectors

F99-00-106G Tip for hardened SC/APC (Optitap®) female connectors

F99-00-107G Tip for ST PC type female connectors

F99-00-108G Short Extended tip for ST PC type female connectors

F99-00-109G Medium Extended tip for ST PC type female connectors

F99-00-110G Long Extended tip for ST PC type female connectors

F99-00-111G 60 degree angled tip for ST female connectors

F99-00-112G Short Extended tip for E2000 PC type female connectors

F99-00-113G Medium Extended tip for E2000 PC type female connectors

F99-00-114G Long Extended tip for E2000 PC type female connectors

F99-00-115G Tip for E2000 APC type female connectors

F99-00-116G Tip for LC PC type female connectors

F99-00-117G Short Extended tip for LC PC type female connectors

F99-00-118G Medium Extended tip for LC PC type female connectors

F99-00-119G Long Extended tip for LC PC type female connectors

F99-00-120G Tip for LC APC type female connectors

F99-00-121G Tip for MU PC type female connectors

F99-00-122G Short Extended tip for MU PC type female connectors

F99-00-123G Medium Extended tip for MU PC type female connectors

F99-00-124G Long Extended tip for MU PC type female connectors

F99-00-125G 60 degree angled tip for MU PC type female connectors

F99-00-126G Tip for LEMO female connectors (SMPTE F2)

F99-00-127G Tip for 2.0 mm female termini

F99-00-128G Tip for 1.6 mm female termini

F99-00-129G Tip for ELIO 1.25 mm female connectors

F99-00-130G Tip for LX.5 PC female connectors

F99-00-131G Tip for LX.5 APC female connectors

F99-00-132G Extended tip for MTP PC type connectors

F99-00-133G Front end tip for MTP PC type connectors

F99-00-134G Extended tip for MTP APC type connectors

F99-00-135G Front end tip for MTP APC type connectors

F99-00-136G Extended tip kit for MTP PC and APC connectors

F99-00-159G Tip optimized for SC/APC bulkhead adapters (recommended)

### Replacement Items

C02-00-019G Carrying Pouch for Video Fiber Scope with Tips

### General

Field of View (FOV)	640 µm to 480 µm
Resolution	0.5 µm detectable
Operating Temperature	0°C to 50°C (14°F to 122°F)
Storage Temperature	-20°C to 50°C (-4°F to 122°F)
Temperature Focus	Autofocus and Manual adjustment, 2 mm max travel
Dimensions	205 mm x 37 mm x 48 mm (with probe protector)
Light Source	Blue LED and built-in flashlight
Power Supply	Rechargeable Li-ion battery or USB 2.0 (or higher) port

