

# DPR-100

compact sized DisplayPort™  
Reference Sink with Sink Console



## Full DP Reference Sink Functionality

DPR-100 is a very compact, yet full featured DisplayPort™ reference Sink. It provides all features needed for testing DisplayPort™ source devices like PC display cards or portable computers. The DPR-100 allows you to monitor all aspects of the DP interface like Link and HDCP status and MSA. You can manually read and set DPR-100 DPCD, sink capabilities, issue varying HPD pulses etc. The Sink Console GUI also includes an advanced EDID parser for viewing and reprogramming its EDID information.

## Audio and HDCP Compliance Test

DPR-100 is a platform for running Audio and HDCP tests for DUT DP Source devices. DPR-100 with an appropriate software is certified by DCP LLC as **Authorized Test Equipment** for HDCP CTS.

## AUX Controller for PHY Tests

As a second role, DPR-100 is operating as a DP AUX Controller to automate the DP PHY testing with a compliant PHY Test Equipment. With the AUX Controller firmware DPR-100 is compatible with Keysight, Teledyne LeCroy and Tektronix oscilloscopes. .

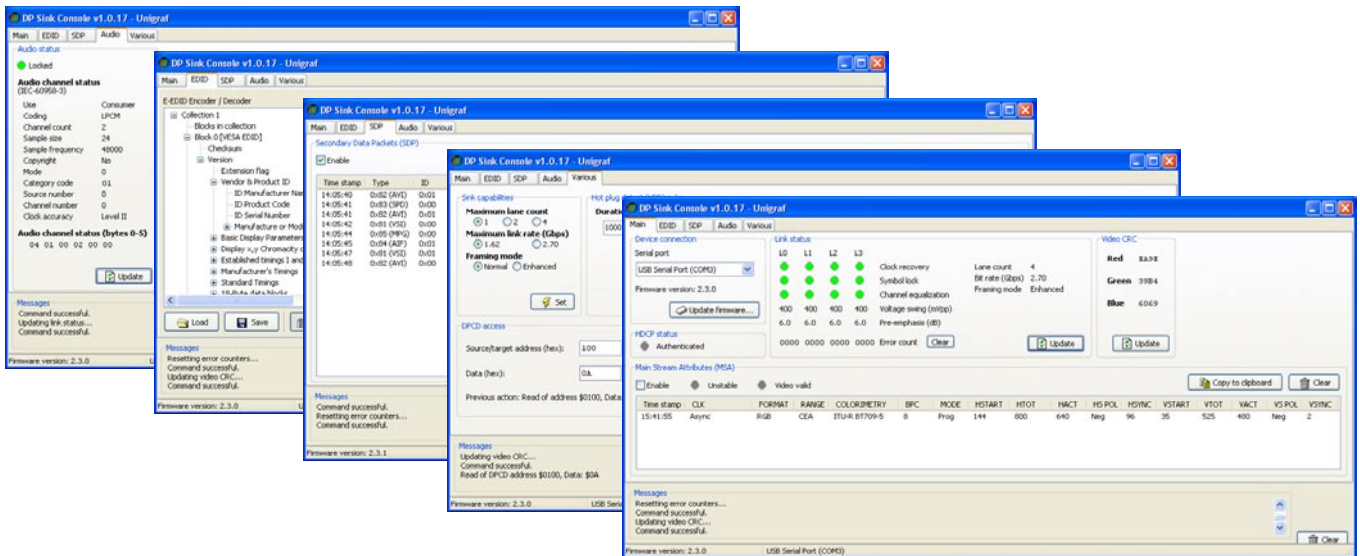
## Benefits

- Compact sized DisplayPort™ sink
- Sink Console GUI enables full monitoring of the DP interface
- Certified for HDCP CTS
- AUX Controller for PHY CTS
- USB controlled and powered



# DPR-100

compact sized DisplayPort™ Reference Sink  
with Sink Console



## Sink Console GUI

As a development and debug tool, the DPR-100 is connected to a PC through its USB I/F and is operated from a GUI application. This application allows to

- Monitor the link status and Main Stream Attributes (MSA) like timing and color coding used
- Monitor video CRC and link error count
- Monitor Audio status
- Edit and vary DPR-100 DPCD information
- Reprogram EDID
- Vary DPR-100 capabilities like lane count and max rate
- Issue HPD with varying duration
- Report HDCP authentication status
- Audio output

## CTS Software

The optional DisplayPort™ RefSink CTS tool enables executing Audio, HDCP or Extended HDCP compliance tests. Please refer to the documentation of the RefSink CTS Tool.

## Specifications

DisplayPort™ input	STMicroelectronics gm68020 receiver. Supports 1, 2 or 4 lane configurations, four levels of pre-emphasis and voltage swing, high and reduced bit rates
Resolutions	All VESA DMT/CVT and CEA 861-D timings up to 2560 x 1600 (RB) 60 Hz
EDID	Load EDID data from file, Program new EDID, Display & edit EDID contents
Audio	Up to 2 LPCM channels at 192 kHz, 24-bits or multi-channel compressed (AC3, DTS, etc) compliant with IEC60958 / IEC61937
Control	USB interface
Power supply	USB powered
Mechanical Size	105 x 130 x 35 mm
Weight	240 g

Specifications subject to change

 **UNIGRAF**  
www.unigraf.fi



**UNIGRAF OY** Piispantilankuja 4, FI-02240 Espoo, Finland  
Tel +358 9 859 550; info@unigraf.fi

Please visit our web page for listing of Unigraf Worldwide Distribution