

The Network Industry's First 100G Packet Capture Appliance



Capture 100% / Replay 100%

BENEFITS

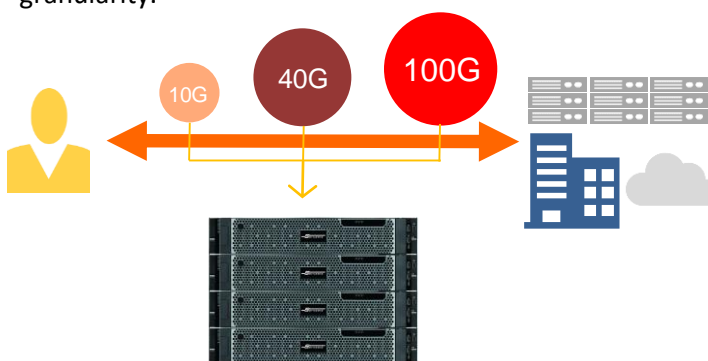
- ✓ Improve customer experience
- ✓ Prevent loss of business due to network downtime
- ✓ Insure network infrastructure vendors have complete data for troubleshooting
- ✓ Extend the value of existing network tools with automated actions
- ✓ Reduce network operating cost with better team collaboration and efficiency

HIGHLIGHTS

- ✓ Full line rate capture with no packet loss, with patented stream to disk technology
- ✓ Support for 1G/10G/40G/100G interfaces
- ✓ Capture weeks even months of network data
- ✓ Replay captured traffic even 100Gbp
- ✓ Simple, intuitive yet powerful GUI
- ✓ All-in-one appliance
- ✓ Multi-Language support
- ✓ Web browser based Protocol Analyzer with real-time decode.
- ✓ Wireshark analyzer can be installed as a plugin
- ✓ Strong data indexing provides fast packet retrieval from storage
- ✓ Detect microburst traffic in 100 microsec intervals
- ✓ Multi-TB captured packets playback in micro-second level allowing to replay microburst traffic

SYNESIS is a network data recorder that can continuously capture up to **100Gbps**. **SYNESIS**, an all-in-one packet capture system, is easily deployed in data centers, remote site branches, and test labs as a physical appliance. Configuration is minimal so it can be installed and capturing high speed traffic in minutes.

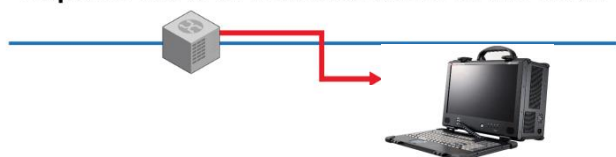
Existing network tools just can't keep up with today's traffic rates caused by increased user demand for bandwidth intensive applications. The result - oversubscription of tools which leads to mis-diagnosis. Only **SYNESIS** is able to capture all network packet data completely and at high granularity.



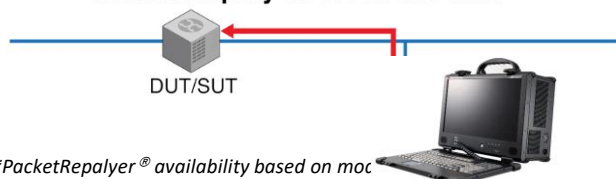
Now with PacketReplayer®!

Replay single packets or data from extended long term capture sessions. Perfect application for R&D/QA and Field Support teams!

Capture 100% of network traffic in the field!

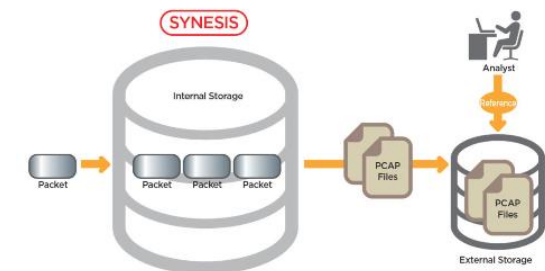


...then Replay 100% in the lab!



**PacketReplayer® availability based on moc*

Packet Capture



SYNESIS is a capture appliance compatible with 10M/100M/1G/10G/40G/100G networks that can capture traffic at wire speed without data loss, which is widely proved with patent on data processing. A backup function allows saving to PCAP files automatically while capturing. The storage destination can either be a local or remote file system.

Smart Analytics

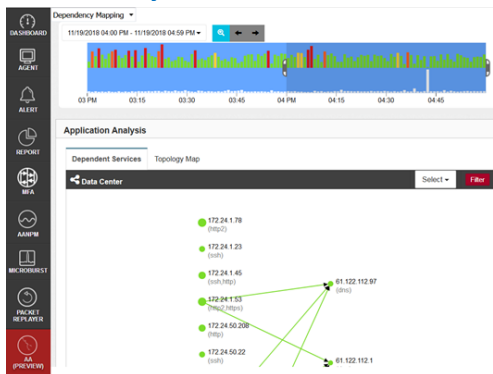


Figure 1: Advanced Application Analysis

Application Performance Monitoring Support
Indexed with KPI (Key Performance Indicator), network status can be ascertained at a trend level basis.
MFA (Multi Flow Analysis) provides a visibility by displaying ladder diagram of connection view end-to-end, to see how transactions propagate.
AA(Advanced Application Analysis) *provides a one quick look of health status of application server in post analysis ,with dynamic GUI.
*Preview version, limited model only

PacketReplayer®

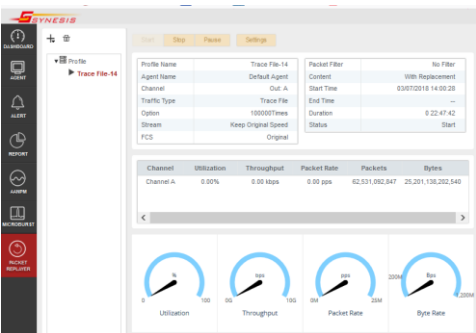


Figure 2: Packet Replayer – Replay real life traffic

Real-life Wire-rate Traffic capture and replay up to **100Gbps** with micro-second level packet gap granularity. the following items can be replaced from the packet header within the PCAP file.
-MAC address
-VLAN ID
-IP address (v4/v6)

Customized and Profiling Dashboard

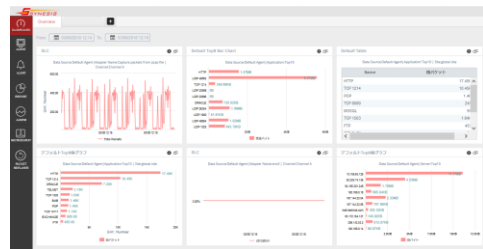


Figure 3: Customized and Profiling Dashboard

The Dashboard is a page that displays real-time trend information for each selected agent. Each user will have their own dedicated configurable dashboards display which also allows customization on display widget and page level. Any dashboards added or removed are user base. Multiple dashboard profiles are supported

Intelligent Report Builder

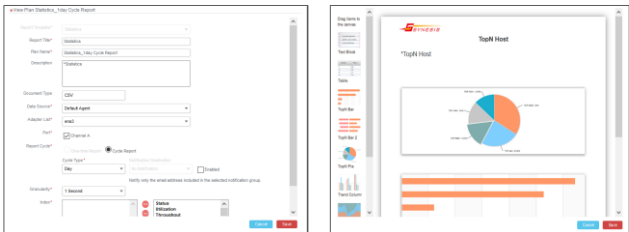




















Figure 4: Intelligent report engine with drag and drop ability

Users can build reports by using drag -and -drop with modular graphic components and pre-defined templates. The report can be created daily, weekly and monthly with auto notification function.

System Specifications										
Model	SYU/SYC-2G-ER	SYU/SYC-4G-R	SYU/SYC-8G2-HCR	SYU/SYC-10G-ER	SYU/SYC-20G-HPR2	SYU/SYC-40G-HPR2	SYU/SYC-80G2-HPR2	SYU/SYC-100G-HPR2	SYU/SYC--C-ES	SYU/SYC--P-ES
	         									
Monitoring Port	4 x 1GbE	4 x 1GbE	8 x 1GbE	2 x 10GbE/1GbE	4 x 10GbE/1GbE	4 x 10GbE/1GbE	8 x 10GbE/1GbE	4 x 10GbE/1GbE, 2x 40G QSFP 2x 100G QSFP28	-	-
Interface	100/100 BASE-T,1000 BASE-SX/LX			10G BASE-T/SR/LR/ER, 1000BASE-T/SX/LX				100G SR4/LR4	-	-
Capture Performance	2Gbps	4Gbps	8Gbps	10Gbps	20Gbps	40Gbps	80Gbps	100Gbps	-	-
Local Storage (TB)	30.0	9.0	95.0	9.0	32.5	65.0	130.0	162.5	95.0	32.5
Time stamp resolution	1ns	1ns	1ns	1ns	1ns	1ns	1ns	1ns	-	-
RAID	5	5	6	5	6	6	6	6	-	-
PacketReplayer	-	Y	-	-	Y	Y	-	Y	-	-
PTP/1PPS syncro	Y	Y	Y	Y	Y	Y	Y	Y	-	-
Power Consumption (W)	350	350	1100	350	1100	Control 1100 x 1unit Storage 600 x 1unit	Control 1100 x 1unit Storage 600 x 3unit	Control 1100 x 1unit Storage 600 x 4unit	600	600
Operating temperature/humidity	10-35°C /50-95°F /8%-85%（noncondensing）									
Weight (Kg)	14.0	14.0	22.0	14.0	22.0	Control unit:22 Storage unit: 24（each unit）			24.0	24.0
Dimensions H x W x D (cm)	4.3 x 43.4 x 53.5	4.3 x 43.4 x 48.4	8.7 x 44.4 x 71.6	4.3 x 43.4 x 48.4	8.7 x 44.4 x 71.6	Control unit: 8.7 x 44.4 x 71.6 Storage unit: 8.7 x 48.2 x 54.1			8.7 x 48.2 x 54.1	8.7 x 48.2 x 54.1

Model	SYU/SYC-2G-EP2	SYU/SYC-4G-HPP2	SYU/SYC-10G-EP	SYU/SYC-20G-HPP2	SYU/SYC-40G-HPP2	SYU/SYC-80G2-HPP2	SYU/SYC-100G-HPP2	SYU/SYC-200G-HPP
	       							
Monitoring Port	4 x 1GbE	4 x 1GbE	2 x 10GbE/1GbE	4 x 10GbE/1GbE	4 x 10GbE/1GbE	8 x 10GbE/1GbE	4 x 10GbE/1GbE 40G QSFP+ x28 100G QSFP28 x 2	100G QSFP28 x 4
Interface	100/100 BASE-T,1000 BASE-SX/LX		10G BASE-T/SR/LR/ER, 1000BASE-T/SX/LX				100G SR4/LR4	100G SR4/LR4
Capture Performance	2Gbps	4Gbps	10Gbps	20Gbps	40Gbps	80Gbps	100Gbps	200Gbps
Local Storage (TB)	1.5	3.9	3.9	11.0	19.0	44.5	57.5	100.0
Time stamp resolution	1ns	1ns	1ns	1ns	1ns	1ns	1ns	1ns
RAID	-	-	-	-	-	-	-	-
PacketReplayer	-	Y	Y	Y	Y	-	Y	Y
PTP/1PPS syncro	Y	Y	Y	Y	Y	Y	Y	Y
Power Consumption (W)	400	400	400	400	400	600 (AC100V) 680(AC200V)	800	800
Operating temperature/humidity	10-35°C /50-95°F /8%-85%（noncondensing）							
Weight (Kg)	9.0	9.0	9.0	9.0	9.0	13.4	19.8	22.0
Dimensions H x W x D (cm)	25.4 x 38.1 x 17.8					32.9 x 40.6 x 17.5	33.9 x 43.0 x 25.0	42.0 x 43.0 x 25.0



TOYO Corporation

1-1-6, Yaesu ,Tokyo 103-8284, Japan

Tel: +81 (3) 3245 1250

SYNESIS Brand site:<https://www.synesis.tech/en/>

CorporateWeb:<http://www.toyo.co.jp/english/>

Email:synesis-sales@toyo.co.jp